

OPPORTUNITY SCHOLARSHIP

Formerly Regents Scholarship



New legislation passed during the 2021 session created a simplified, statewide, achievement-based scholarship—the Opportunity Scholarship. The Opportunity Scholarship will be available to students beginning with the high school graduating class of 2022.

What are the requirements?

- Earn a 3.3 cumulative high school GPA
- Complete 1 course in each of the 3 core areas.

Language Arts (complete at least one)

AP English Language
AP Literature & Composition
CE English 1010
CE English 2010
CE English 2200
CE Communication 1010 (Applied Communication)

Mathematics (complete at least one)

AP Calculus AB
AP Calculus BC
AP Statistics
CE Math 1030
CE Math 1050

Science (complete at least one)

AP Biology
AP Environment Science
AP Physics
CE Chemistry 1110
CE Physics 1010/1015

- Complete the Free Application for Federal Student Aid (FAFSA)
- Graduate from a Utah high school

For Details, use the following URL.

<https://ushe.edu/state-scholarships-aid/opportunity-scholarship/>



PREPARING FOR BYU

Please remember that this is a list of recommendations, **not requirements!** All of their recommendations stem from the AIM's of a BYU education which are: spiritually strengthening, intellectually enlarging, character building, leading to lifelong learning and service. They are looking for applicants who demonstrate in their application, that they value these same things.

BYU Specific Recommendations:

Participate in and graduate from seminary.

Take the most rigorous courses available to you in which you can be successful. For example: Honors, AP and CE (concurrent enrollment). Keep in mind that the grades in CE classes will always be on your college transcript.

Take the ACT or SAT multiple times - They will use your highest composite score. If you take one standardized test, and don't do well, they recommend taking the other. The tests are different, so you may do better on one than the other.

Get involved in extracurricular activities that are meaningful to you; develop your specific talents.

Arts (Music, Art, Theater, Dance)

Athletics

Church (Any Denomination)

Community (Military, Clubs, Student Government, Politics)

Employment

Humanities (Language, Writing, Speech)

Service

STEM (Science, Technology, Engineering, Math)

Plan to provide specific examples of how you have contributed to your community in meaningful ways as you write your application essays during the beginning of your senior year.

Recommended high school courses:

4 years of mathematics

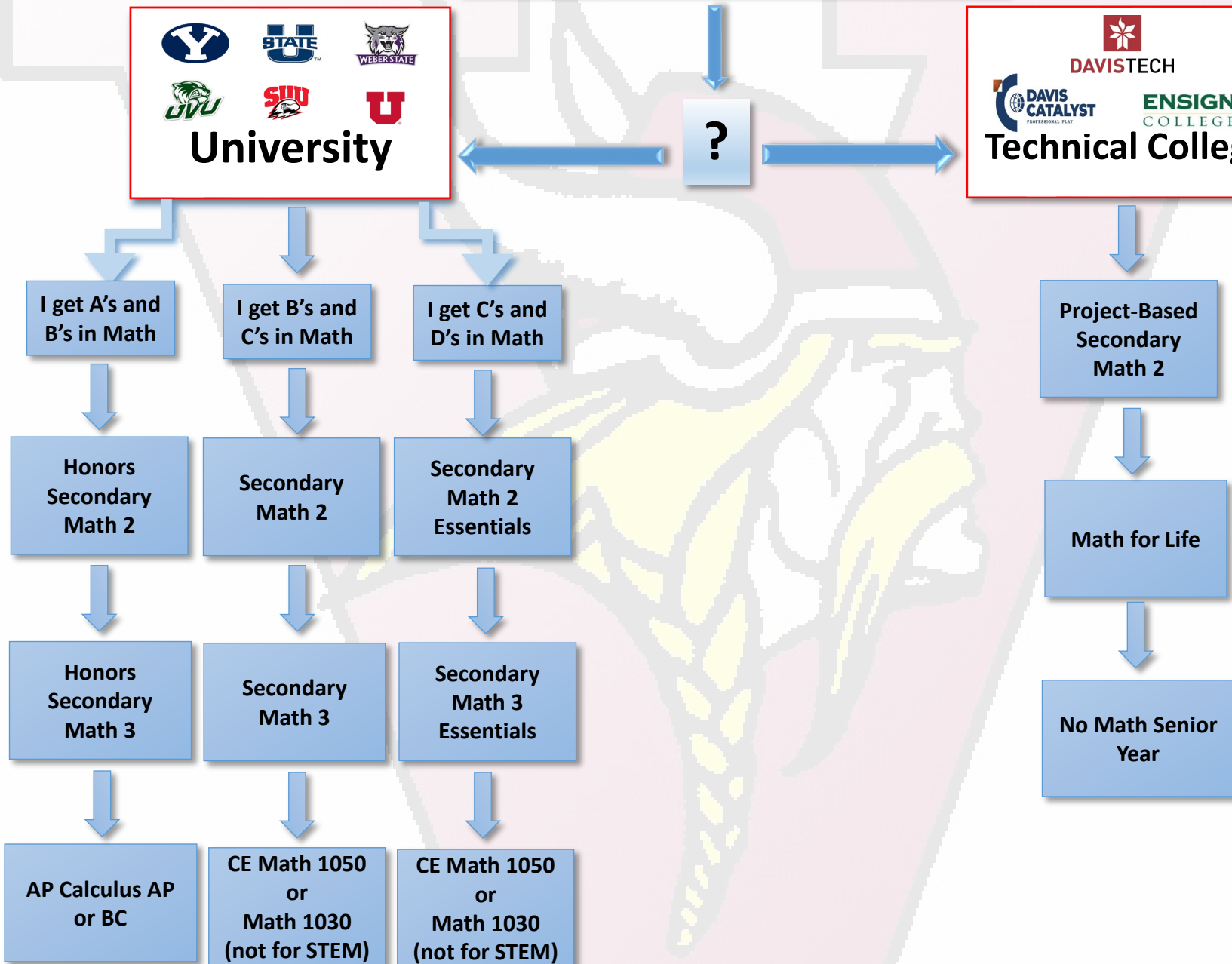
4 years of English

2-3 years of laboratory science

2 years of history or government

2 or more years of foreign language

WHAT IS MY MATH PATH?



Utah State University Scholarships (Estimated 10/2022)

		ACT																		
		36	35	34	33	32	31	30	29	28	27	26	25	24	23	22	21	20	19	18
GPA	4.00																			
	3.95																			
	3.90																			
	3.85																			
	3.80																			
	3.75																			
	3.70																			
	3.65																			
	3.60																			
	3.55																			
	3.50																			
	3.45																			
	3.40																			
	3.35																			
	3.30																			
	3.25																			
	3.20																			
	3.15																			
	3.10																			
	3.05																			
	3.00																			
	2.95																			
	2.90																			
	2.85																			
	2.80																			
	2.75																			
	2.70																			
100% tuition + fees for 4 years							\$3000 2 years													
\$7387 2 years							\$2000 2 years													
\$4500 2 years							\$1000 2 years													

Utah Valley University (Estimated 10/2022)

		Grade Point Average																				
ACT Score		4.0	3.9	3.8	3.7	3.6	3.5	3.4	3.3	3.2	3.1	3.0	2.9	2.8	2.7	2.6	2.5	2.4	2.3	2.2	2.1	2.0
	36	142	140	139	137	135	133	132	130	128	126	124	123	121	119	117	116	114	112	110	108	106
	35	140	138	137	135	133	131	130	128	126	124	122	121	119	117	115	114	112	110	108	106	105
	34	138	136	135	133	131	129	128	126	124	122	120	119	117	115	113	112	110	108	106	104	103
	33	136	134	133	131	129	127	126	124	122	120	118	117	115	113	111	110	108	106	104	102	101
	32	134	132	131	129	127	125	124	122	120	118	116	115	113	111	109	108	106	104	102	100	99
	31	133	131	130	128	126	124	123	121	119	117	115	114	112	110	108	107	105	103	101	99	98
	30	131	129	128	126	124	122	121	119	117	115	113	112	110	108	106	105	103	101	99	97	96
	29	129	127	126	124	122	120	119	117	115	113	111	110	108	106	104	103	101	99	97	95	94
	28	127	125	124	122	120	118	117	115	113	111	109	108	106	104	102	101	99	97	95	93	92
	27	126	124	123	121	119	117	116	114	112	110	108	107	105	103	101	100	98	96	94	92	91
	26	124	122	121	119	117	115	114	112	110	108	106	105	103	101	99	98	96	94	92	90	89
	25	122	120	119	117	115	113	112	110	108	106	104	103	101	99	97	96	94	92	90	88	87
	24	120	118	117	115	113	111	110	108	106	104	102	101	99	97	95	94	92	90	88	86	85
	23	118	116	115	113	111	109	108	106	104	102	100	99	97	95	93	92	90	88	86	84	83
	22	117	115	114	112	110	108	107	105	102	101	99	98	96	94	92	91	89	87	85	83	82
	21	115	113	112	110	108	106	105	103	101	99	97	96	94	92	90	89	87	85	83	81	80
	20	113	111	110	108	106	104	103	101	99	97	95	94	92	90	88	87	85	83	81	79	78
	19	111	109	108	106	104	102	101	99	97	95	93	92	90	88	86	85	83	81	79	77	76
	18	109	107	106	104	102	100	99	97	95	93	91	90	88	86	84	83	81	79	77	75	74
	17	108	106	105	103	101	99	98	96	94	92	90	89	87	85	83	82	80	78	76	74	73
	16	106	104	103	101	99	97	96	94	92	90	88	87	85	83	81	80	78	76	74	72	71
	15	104	102	101	99	97	95	94	92	90	88	86	85	83	81	79	78	76	74	72	70	69
14	102	100	99	97	95	93	92	90	88	86	84	83	81	79	77	76	74	72	70	68	67	

Full Tuition + Fees

\$2000 per semester for four years

\$1750 per semester for four years

\$1000 per semester for one year

Admitted

Weber State University (Estimated 10/2022)

Grade Point Average

ACT Score	ACT	4.0	3.9	3.8	3.7	3.6	3.5	3.4	3.3	3.2	3.1	3.0	2.9	2.8	2.7	2.6	2.5	2.4	2.3	2.2	2.1	2.0
	36	142	140	139	137	135	133	132	130	128	126	124	123	121	119	117	116	114	112	110	108	106
	35	140	138	137	135	133	131	130	128	126	124	122	121	119	117	115	114	112	110	108	106	105
	34	138	136	135	133	131	129	128	126	124	122	120	119	117	115	113	112	110	108	106	104	103
	33	136	134	133	131	129	127	126	124	122	120	118	117	115	113	111	110	108	106	104	102	101
	32	134	132	131	129	127	125	124	122	120	118	116	115	113	111	109	108	106	104	102	100	99
	31	133	131	130	128	126	124	123	121	119	117	115	114	112	110	108	107	105	103	101	99	98
	30	131	129	128	126	124	122	121	119	117	115	113	112	110	108	106	105	103	101	99	97	96
	29	129	127	126	124	122	120	119	117	115	113	111	110	108	106	104	103	101	99	97	95	94
	28	127	125	124	122	120	118	117	115	113	111	109	108	106	104	102	101	99	97	95	93	92
	27	126	124	123	121	119	117	116	114	112	110	108	107	105	103	101	100	98	96	94	92	91
	26	124	122	121	119	117	115	114	112	110	108	106	105	103	101	99	98	96	94	92	90	89
	25	122	120	119	117	115	113	112	110	108	106	104	103	101	99	97	96	94	92	90	88	87
	24	120	118	117	115	113	111	110	108	106	104	102	101	99	97	95	94	92	90	88	86	85
	23	118	116	115	113	111	109	108	106	104	102	100	99	97	95	93	92	90	88	86	84	83
	22	117	115	114	112	110	108	107	105	102	101	99	98	96	94	92	91	89	87	85	83	82
	21	115	113	112	110	108	106	104	103	101	99	97	96	94	92	90	89	87	85	83	81	80
	20	113	111	110	108	106	104	103	101	99	97	95	94	92	90	88	87	85	83	81	79	78
	19	111	109	108	106	104	102	101	99	97	95	93	92	90	88	86	85	83	81	79	77	76
	18	109	107	106	104	102	100	99	97	95	93	91	90	88	86	84	83	81	79	77	75	74
	17	108	106	105	103	101	99	98	96	94	92	90	89	87	85	83	82	80	78	76	74	73
	16	106	104	103	101	99	97	96	94	92	90	88	87	85	83	81	80	78	76	74	72	71
	15	104	102	101	99	97	95	94	92	90	88	86	85	83	81	79	78	76	74	72	70	69
	14	102	100	99	97	95	93	92	90	88	86	84	83	81	79	77	76	74	72	70	68	67

\$6,391 Annually, \$24,424 Total

\$3,500 Annually, \$14,000 Total

\$2,000 Annually, \$8,000 Total

\$1,000 Annually, \$4,000 Total

\$500 Annually, \$2,000 Total

Admitted

Weber GE Requirements	Grade Taken	Viewmont CE and AP Classes																	
ENGLISH COMPOSITION 1	12	CE English 1010 (sem)																	
ENGLISH COMPOSITION 2	12	CE English 2015 (sem)																	
INFORMATION LITERACY	12	Included in English 2015																	
HUMANITIES	12	CE Communications (sem)	10 11 12	CE Chinese Bridge 3000 (yr)	10 11 12	AP Spanish Language (yr)	10 11 12	AP Chinese Language (yr)	←	Pass AP exams with a 5									
QUANTITATIVE LITERACY	10 11 12	CE Math 1030 (yr)	10 11 12	CE Math 1050 (yr)	10 11 12	AP Calculus AB (yr, two periods)	10 11 12	AP Calculus BC (yr, two periods)	10 11 12	AP Statistics (yr)									
CREATIVE ARTS 1	10 11 12	CE Dance (sem)	11 or 12	CE Intro to Music (sem)	10 11 12	CE Interior Design 1&2 (yr)	10 11 12	CE Art 1030 (sem)	11 or 12	CE Theater (sem)	10 11 12	AP Drawing (yr)	10 11 12	CE Game Development (sem)	10 11 12	CE Commercial Photography (sem)			
CREATIVE ARTS 2	10 11 12	CE Dance (sem)	11 or 12	CE Intro to Music (sem)	10 11 12	CE Interior Design 1&2 (yr)	10 11 12	CE Art 1030 (sem)	11 or 12	CE Theater (sem)	10 11 12	AP Drawing (yr)	10 11 12	CE Game Development (sem)	10 11 12	CE Commercial Photography (sem)			
AMERICAN INSTITUTIONS	11 or 12	CE US History 1700 (yr)	11 or 12	AP US History (yr)	11 or 12	CE US Government (sem)													
DIVERSITY	11 or 12	*CE Human Dev. (sem)	11 or 12	*CE Dance (sem)	9	*AP Human Geography (yr)	10 11 12	*AP World History (yr)											
PHYSICAL SCIENCE	10 11 12	CE Chemistry (yr)	11 12	CE Physics (yr)	10 11 12	AP Physics 1 Algebra Based (yr)	10 11 12	AP Physics C Calculus Based (yr)	10 11 12	AP Chemistry (yr)									
LIFE SCIENCE	9	AP Envir. Science (yr)	11 or 12	CE Fnd. of Nutrition (sem)	10 11 12	AP Biology (yr)													
PHYSICAL OR LIFE SCIENCE	9	AP Envir. Science (yr)	10 11 12	CE Chemistry (yr)	11 12	CE Physics (yr)	10 11 12	AP Physics 1 Algebra Based (yr)	10 11 12	AP Physics C Calculus Based (yr)	11 or 12	CE Fnd. of Nutrition (sem)	10 11 12	AP Biology (yr)	10 11 12	AP Chemistry (yr)			
SOCIAL SCIENCE 1	11 or 12	CE Human Dev. (sem)	10 11 12	AP Psychology (yr)	10 11 12	AP World History (yr)	9	AP Human Geography (yr)											
SOCIAL SCIENCE 2	11 or 12	CE Human Dev. (sem)	10 11 12	AP Psychology (yr)	10 11 12	AP World History (yr)	9	AP Human Geography (yr)											
12TH GRADE				11TH GRADE				10TH GRADE				9TH GRADE							
1ST SEMESTER		2ND SEMESTER		1ST SEMESTER		2ND SEMESTER		1ST SEMESTER		2ND SEMESTER		1ST SEMESTER		2ND SEMESTER					
1	CE English	1	CE English	1	English 11	1	English 11	1	English 10	1	English 10	1	English 9	1	English 9				
2	CE Communications	2	US Govt.	2	Math	2	Math	2	Math	2	Math	2	Math	2	Math				
3		3		3	General Fin. Lit.	3	PE	3	World History	3	World History	3	Geography	3	Geography				
4		4		4	US History	4	US History	4	Biology	4	Biology	4	Earth Systems	4	Earth Systems				
5		5		5		5		5	Health	5	Fit for Life	5	Physical Ed .PE 9	5	Fine Art				
6		6		6		6		6	Digital Learning	6	Dr.Ed	6		6					
7		7		7		7		7		7		7		7					
8		8		8		8		8		8									
Key: (sem) = semester class (yr) = year class				1. Select one class for each GE Requirement by circling the grade in which the class will be taken.				2. Each class can be used only once, except those in the Diversity requirement.				Students can earn all or part of the COC. Classes in a partially completed COC will most likely transfer, but will be subject to review.				Students that receive The Weber State General Education Letter of Completion, can present it to any State of Utah funded college or university and have all GE classes waived at that school.			
																Students must pass AP exams with a 3-4 or 5 and submit their scores to Weber State. 5 for foreign language exams.)			
																For CE classes, no grade lower than a C will be accepted for COC credit.			
																BYU and Westminster will accept the COC, but will add courses.			
* Can be use for Diversity and one other requirement				*Weber State University is the granting institutuon				*This only a planning tool, students should track progress in the Weber Portal.				*GE requirements are subject to change							

The WSU Certificate of Completion (COC)

A GREAT OPTION FOR COLLEGE BOUND VIEWMONT STUDENTS



What is the COC?



- ▶ A Certificate from Weber State University stating all General Education Requirements are fulfilled
- ▶ The COC can be presented to any State University or College and their GE requirements are waived, even if they are different.
- ▶ Approximately 37 college credits from both AP and CE classes

What is the COC?

Required
coursework in
these areas.



Students can
complete the
requirements through
AP and CE, grades 9-
12

- ▶ ENGLISH COMPOSITION
- ▶ MATH
- ▶ HUMANITIES
- ▶ CREATIVE ARTS
- ▶ AMERICAN INSTITUTIONS
- ▶ DIVERSITY
- ▶ PHYSICAL SCIENCE
- ▶ LIFE SCIENCE
- ▶ SOCIAL SCIENCE
- ▶ INFORMATION LITERACY

Associates Degree (2 yr)



37 General
Education Credits

+

23 Elective
Credits

=

60
Credits

Approximately
20 classes

Bachelors Degree (4 yr)

37 General
Education Credits

+

83 Major
Specific
Credits

=

120
Credits

Approximately
40 classes



The Best Option for Time and Cost



The COC
37 Credits



+

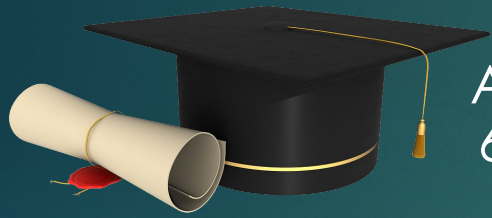
83 Major
Specific
Credits

=



120
Credits

Another Option for a Bachelors...



Associate
60 Credits

+

83 Major
Specific
Credits

=



Almost 1 year of school
and near \$14,000 in
college costs

143
Credits



23 Unnecessary
Credits.

Benefits of the COC

► For Example:

- A Student Attending Utah State University that has earned the Weber COC
 - Waives a year and a half of college
 - Saves students near \$30,000 in tuition, fees, books and housing costs.
 - Helps prepare students for the rigors of college academics
 - Waives difficult “Freshman Weed-out” classes.
 - Students graduate from college one and a half years earlier, entering the workforce sooner, with thousands in salary gained.

The COC is not an all or nothing thing.

- ▶ If a student completes a percentage of the classes, that percentage will **most likely** transfer to the school of his or her choice
- ▶ BYU takes the COC, but adds a couple of requirements

A Potential Problem....

- ▶ Students enter college as a sophomore.
 - ▶ They must be prepared to declare a major.



Potential Pitfalls.....

- ▶ High school students taking CE classes are establishing a college GPA.
 - ▶ Low grades can negatively affect admissions to selective undergraduate programs or graduate schools such as:
 - ▶ Medical School
 - ▶ Dental School
 - ▶ Law School
 - ▶ Nursing
 - ▶ Business



It Takes Careful Planning

Take one class in each area.

Weber GE Requirements	Grade Taken	Viewmont CE and AP Classes									
ENGLISH COMPOSITION 1	12	CE English 1010 (sem)									
ENGLISH COMPOSITION 2	12	CE English 2015 (sem)									
INFORMATION LITERACY	12	Included in English 2015									
HUMANITIES	12	CE Communications (sem)	10 11 12	CE Chinese Bridge 3000 (yr)	10 11 12	AP Spanish Language (yr)	10 11 12	AP Chinese Language (yr)	← Pass AP exams with a 5		
QUANTITATIVE LITERACY	10 11 12	CE Math 1030 (yr)	10 11 12	CE Math 1050 (yr)	10 11 12	AP Calculus AB (yr, two periods)	10 11 12	AP Calculus BC (yr, two periods)	10 11 12	AP Statistics (yr)	
CREATIVE ARTS 1	10 11 12	CE Dance (sem)	11 or 12	CE Intro to Music (sem)	10 11 12	CE Interior Design 1&2 (yr)	10 11 12	CE Art 1030 (sem)	11 or 12	CE Theater (sem)	10 11 12 AP Drawing (yr)
CREATIVE ARTS 2	10 11 12	CE Dance (sem)	11 or 12	CE Intro to Music (sem)	10 11 12	CE Interior Design 1&2 (yr)	10 11 12	CE Art 1030 (sem)	11 or 12	CE Theater (sem)	10 11 12 AP Drawing (yr)
AMERICAN INSTITUTIONS	11 or 12	CE US History 1700 (yr)	11 or 12	AP US History (yr)	11 or 12	CE US Government (sem)					
DIVERSITY	11 or 12	*CE Human Dev. (sem)	11 or 12	*CE Dance (sem)	9	*AP Human Geography (yr)	10 11 12	*AP World History (yr)			
PHYSICAL SCIENCE	10 11 12	CE Chemistry (yr)	11 12	CE Physics (yr)	10 11 12	AP Physics 1 Algebra Based (yr)	10 11 12	AP Physics C Calculus Based (yr)	10 11 12	AP Chemistry (yr)	
LIFE SCIENCE	9	AP Envir. Science (yr)	11 or 12	CE Fnd. of Nutrition (sem)	10 11 12	AP Biology (yr)					
PHYSICAL OR LIFE SCIENCE	9	AP Envir. Science (yr)	10 11 12	CE Chemistry (yr)	11 12	CE Physics (yr)	10 11 12	AP Physics 1 Algebra Based (yr)	10 11 12	AP Physics C Calculus Based (yr)	11 or 12 CE Fnd. of Nutrition (sem)
SOCIAL SCIENCE 1	11 or 12	CE Human Dev. (sem)	10 11 12	AP Psychology (yr)	10 11 12	AP World History (yr)	9	AP Human Geography (yr)			
SOCIAL SCIENCE 2	11 or 12	CE Human Dev. (sem)	10 11 12	AP Psychology (yr)	10 11 12	AP World History (yr)	9	AP Human Geography (yr)			

Sample COC 4 year Plan A

High School Four Year Plan (Better)

12TH GRADE			
1ST SEMESTER		2ND SEMESTER	
1	CE English 1010	1	CE English 2010 and Lib Sci 1704
2	CE Communications	2	US Govt.
3	AP Calculus AB or BC	3	AP Calculus AB or BC
4	AP Calculus Lab	4	AP Calculus Lab
5	Elective	5	Elective
6	Elective	6	Elective
7	Elective	7	Elective
8	Elective	8	Elective

10TH GRADE			
1ST SEMESTER		2ND SEMESTER	
1	English 10	1	English 10
2	Secondary Math 2	2	Secondary Math 2
3	AP World History	3	AP World History
4	Biology	4	Biology
5	Health	5	Fit for Life
6	Digital Studies	6	Dr.Ed
7	CE Interior Design 2	7	CE Art 1030
8	Elective	8	Elective

11TH GRADE			
1ST SEMESTER		2ND SEMESTER	
1	English 11	1	English 11
2	Secondary Math 3	2	Secondary Math 3
3	General Fin. Lit.	3	CE Foundations of Nutrition
4	AP or CE US History	4	AP or CE US History
5	CE Chemistry or Physics	5	CE Chemistry or Physics
6	PE	6	PE
7	Elective	7	Elective
8	Elective	8	Elective

9TH GRADE			
1ST SEMESTER		2ND SEMESTER	
1	English 9	1	English 9
2	Secondary Math 1	2	Secondary Math 1
3	AP Human Geography	3	AP Human Geography
4	AP Environmental Science	4	AP Environmental Science
5	Physical Ed .PE 9	5	Interior Design 1
6	Elective	6	Elective
7	Elective	7	Elective
8	Elective	8	Elective

Sample COC 4 year Plan B

High School Four Year Plan (Good)

12TH GRADE				11TH GRADE			
1ST SEMESTER		2ND SEMESTER		1ST SEMESTER		2ND SEMESTER	
1	CE English 1010 and Lib Sci 1704	1	CE English 2010	1	English 11	1	English 11
2	CE Communications	2	US Govt.	2	Secondary Math 3	2	Secondary Math 3
3	CE Math 1030 or 1050 or AP Calc	3	CE Math 1030 or 1050 or AP Calc	3	General Fin. Lit.	3	CE Human Development
4	CE Chemistry or Physics	4	CE Chemistry or Physics	4	CE or AP US History	4	CE or AP US History
5	Elective	5	Elective	5	CE Foundations of Nutrition	5	Elective
6	Elective	6	Elective	6	Elective	6	Elective
7	Elective	7	Elective	7	Elective	7	Elective
8	Elective	8	Elective	8	Elective	8	Elective

10TH GRADE				9TH GRADE			
1ST SEMESTER		2ND SEMESTER		1ST SEMESTER		2ND SEMESTER	
1	English 10	1	English 10	1	English 9	1	English 9
2	Secondary Math 2	2	Secondary Math 2	2	Secondary Math 1	2	Secondary Math 1
3	AP World History	3	AP World History	3	Geography	3	Geography
4	Biology	4	Biology	4	Earth Systems	4	Earth Systems
5	Health	5	Fit for Life	5	Physical Ed .PE 9	5	Fine Art
6	Digital Studies	6	Dr.Ed	6	AP Environmental Science	6	AP Environmental Science
7	CE Dance	7	CE Art 1030	7	Elective	7	Elective
8	Elective	8	Elective		Elective		Elective

Sample COC 4 year Plan C

High School Four Year Plan (Fair)

12TH GRADE				11TH GRADE			
1ST SEMESTER		2ND SEMESTER		1ST SEMESTER		2ND SEMESTER	
1	CE English 1010 and Lib Sci 1704	1	CE English 2010	1	English 11	1	English 11
2	CE Communications	2	US Govt.	2	Secondary Math 3	2	Secondary Math 3
3	CE Math 1030 or 1050	3	CE Math 1030 or 1050	3	General Fin. Lit.	3	CE Foundations of Nutrition
4	CE Physics	4	CE Physics	4	US History	4	US History
5	CE Art 1030	5	CE or AP US Govt	5	CE Chemistry	5	CE Chemistry
6	Elective	6	Elective	6	AP Psychology	6	AP Psychology
7	Elective	7	Elective	7	CE Dance	7	CE Human Development
8	Elective	8	Elective	8	Elective	8	Elective

10TH GRADE				9TH GRADE			
1ST SEMESTER		2ND SEMESTER		1ST SEMESTER		2ND SEMESTER	
1	English 10	1	English 10	1	English 9	1	English 9
2	Secondary Math 2	2	Secondary Math 2	2	Secondary Math 1	2	Secondary Math 1
3	World History	3	World History	3	Geography	3	Geography
4	Biology	4	Biology	4	Earth Systems	4	Earth Systems
5	Health	5	Fit for Life	5	Physical Ed .PE 9	5	Fine Art
6	Digital Studies	6	Dr.Ed	6	Elective	6	Elective
7	Elective	7	Elective	7	Elective	7	Elective
8	Elective	8	Elective	8	Elective	8	Elective